

PosiTector® *SPG* Series

Surface Profile Gages for blasted steel, textured coatings and concrete



NEW concrete surface profile probe available

DeFelsko®
The Measure of Quality



Available on the
App Store



PosiTector®
SmartLink™
Compatible

PosiTector® *SPG* Series

All Gages Feature...

Simple

- Fast measurement rate of over 50 readings per minute—ideal for quickly and accurately measuring large surface areas
- Enhanced one-handed menu navigation
- RESET feature instantly restores factory settings

Durable

- Alumina wear face and tungsten carbide tip for long life and continuous accuracy—field replaceable tips
- Solvent, acid, oil, water and dust resistant—weatherproof
- Rugged, indoor/outdoor instrument—ideal for field or shop use
- Shock-absorbing, protective rubber holster with belt clip
- Two year warranty on gage body AND probe

Accurate

- Certificate of Calibration showing traceability to PTB included
- Built-in temperature compensation ensures measurement accuracy
- Glass zero plate and metal shim included
- Conforms to national and international standards including ASTM

Versatile

- PosiTector body universally accepts all PosiTector SPG, 6000, 200, RTR, SPG, DPM, SST, SHD and UTG probes easily converting from a surface profile gage to a coating thickness gage, dew point meter, soluble salt tester, Shore hardness durometer or ultrasonic wall thickness gage
- Cabled probes available for blasted steel, textured coatings and concrete profile
- High contrast LCD with backlit display
- Flip Display enables right-side-up viewing
- Uses alkaline or rechargeable batteries (built-in charger)

Powerful

- Continually displays/updates average, standard deviation, min/max depth and number of readings while measuring
- Screen Capture—save screen images for record keeping and review
- HiLo alarm audibly and visibly alerts when measurements exceed user-specified limits
- Sealed USB port for fast, simple connection to a PC and to supply continuous power. USB cable included.
- PosiSoft USB Drive—stored readings and graphs can be accessed using universal PC/Mac web browsers or file explorers. No software required.
- Software updates via the internet keep your gage current
- Every stored measurement is date and time stamped
- Includes PosiSoft suite of software for viewing and reporting data

Ordering Guide

Probe Type	Integral	Cabled		
Standard	SPG 1	SPG S1	SPG CS1	SPG TS1
Advanced	SPG 3	SPG S3	SPG CS3	SPG TS3
Probe Only	PRBSPG	PRBSPGS	PRBSPGCS	PRBSPGTS
Application	Blasted Steel		Textured Coatings	Concrete Surface Profile
Range	0–500 µm 0–20 mils		0–1,500 µm 0–60 mils	0–6 mm 0–250 mils
Accuracy	±(5 µm + 5%) ±(0.2 mils + 5%)			±(25 µm + 1%) ±(1 mil + 1%)
Tip	Angle	60°*		60°
	Radius	50 µm (2 mils)		500 µm (20 mils)

*30° tips available for conformance to Australian standard AS 3894.5-C

Standard Models

Includes ALL features as shown on left plus...

- Storage of 250 readings per probe—stored readings can be viewed or downloaded

Advanced Models

Includes ALL features as shown on left plus...

- Storage of 100,000 readings from multiple probes in up to 1,000 batches and sub-batches
- SmartBatch™ allows entry of user-defined parameters and criteria for quick statistical analysis to comply with standards such as ASTM D4417
- Live graphing of measurement data
- WiFi technology wirelessly synchronizes with PosiSoft.net and downloads software updates
- **Bluetooth® 4.0 Technology** for data transfer to a mobile device running the PosiTector App or optional portable printer. **BLE API** available for integration into third-party software.
- Onscreen Batch Annotation—add notes, change batch names and more with built-in QWERTY keyboard

PosiTector® *SmartLink*™ Compatible

- Wirelessly connect PosiTector SPG probes to your smart device
- Turns your cell phone or tablet into a virtual PosiTector gage
- Includes free mobile app



All probes feature a durable Alumina wear face and tungsten carbide tip for long life and continuous accuracy.



Accessories

- Certified SPG Standards to verify accuracy and operation of surface profile depth micrometers
- Replacement non-certified metal check shim and glass zero plate
- Replacement tungsten carbide probe tips
- AC Power Kit for continuous AC operation or battery charging
- Rechargeable Batteries—a set of eneloop NiMH AAA batteries

All Gages Come Complete

with glass zero plate, metal check shim, protective rubber holster with belt clip, wrist strap, 3 AAA alkaline batteries, instructions, nylon carrying case with shoulder strap, protective lens shield, Long Form Certificate of Calibration traceable to PTB, USB cable, PosiSoft Software, two (2) year warranty on body and probe.

Size: 137 x 61 x 28 mm (5.4" x 2.4" x 1.1")

Weight: 140 g (4.9 oz.) without batteries

Conforms to ASTM D4417-B, AS 3894.5-C (with optional 30° tip), U.S. Navy NSI 009-32, SANS 5772 and others



PosiSoft® Suite of Software

Four FREE and unique ways to view and report your PosiTector and PosiTest data

PosiSoft Desktop — PC/Mac

Powerful desktop software for downloading, viewing, printing and storing measurement data. No internet connection required.

- Import readings directly from the gage via USB or from legacy PosiSoft desktop versions
- Synchronize measurement data including readings, notes and pictures to and from PosiSoft.net
- Import/Export Templates and Jobs to share with other users
- **NEW** Import PDF forms and overlay **Custom Fields** for automatic population of inspection and measurement data
- Report preview automatically refreshes as changes are made



PosiSoft.net — Web-based

A web-based application offering secure centralized management of readings. Access your data from any web-connected device.

- Synchronize data when connected via USB or WiFi
- Synchronize measurement data including readings, notes and pictures with PosiSoft Desktop and PosiTector App
- Securely store measurement data in the cloud and share with authorized users via a secure login



Jobs Batches Readings

PosiTector App — Mobile

Mobile app connects PosiTector Advanced instruments, the PosiTector SmartLink and the PosiTest AT-A to your *iOS* or *Android* smart device.

- Auto pairing Bluetooth BLE connection
- Automatically generate user-formatted reports and share via email, text, cloud storage services like Dropbox, and more
- Export readings to PosiSoft Desktop or synchronize readings to and from PosiSoft.net for further reporting and archival options



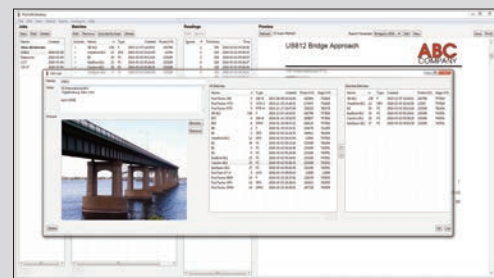
PosiSoft Custom PDF Report Generator

Easily create reports from your measurement data in seconds.

featured on
PosiSoft Desktop
PosiSoft.net
PosiTector App



- Include inspection information such as on-site pictures, screen captures, notes and more to communicate important details
- Create and save multiple custom layouts as templates – insert cover pages, add logos/images, and select font and point size
- Select the information to include for each product type – charts, histograms, readings, time stamps and more
- Compile multi-batch reports from one or more probes and instrument types
- Export readings as comma separated value (.CSV) files which can easily be imported into Excel and other supporting applications



Jobs feature consolidates batches into groups to keep measurement data organized and to quickly create multi-batch reports (not available on PosiTector App)

PosiSoft USB Drive — Gage Based



A simple gage interface to retrieve data in a manner similar to USB flash drives, cameras, or digital audio players. No software to install or internet connection required.

- View and print readings and graphs using universal PC/Mac web browsers and file explorers
- Measurement data can be printed quickly from a formatted HTML report or exported in .CSV format for further analysis in spreadsheets
- Simple file management - Copy and paste measurement data from the PosiTector to a local folder on your computer, network folder or cloud drive
- Access stored screen captures (snapshots) of the PosiTector display